



Welton News & Views  
June 2026

# WELTON DEFIBRILLATORS

The village has 2 defibrillators:

1. Inside the Village Hall - available when the hall is open.
2. On the outside wall of The White Horse adjacent to the front door



**Ring 999 and the emergency services will provide you with the code to unlock the door.**

**Take out the defibrillator and use on the patient following the instructions given by the unit.**

## Restart a Heart

<https://www.resus.org.uk/get-involved/restart-heart-day>

British Heart Foundation : [www.bhf.org.uk](http://www.bhf.org.uk)

Medic Alert (NHS approved) : [www.medicalert.org.uk](http://www.medicalert.org.uk)

**A reminder when helping a potential cardiac arrest patient, call for help first, dial 999, check for breathing - if not a cardiac arrest put patient in recovery position, if not breathing start CPR. If a defibrillator is on hand, take the defibrillator out, switch it on and follow the instructions. Remember : the defibrillator will automatically check if the patient needs a shock, if not required the defibrillator will not let you administer one. CPR may still be the best option until medical assistance arrives.**

I went to the doctor this morning - he told me I was overweight. I said, "I know Doc - but I've had a lot on my plate".



We named our children War and Peace - it's a long story.

## A Word From The Editor

Hello Everyone,

It's that time of year again when everything starts to happen - Village Fete, Soapbox Derby, Make, Bake, Grow & Show! Not to mention ongoing activities at WOW, the History Group, Welton Walkers & Dog Walkers, St Martin's, Short Mat Bowls, The White Horse, Brownies, Welton Good Neighbours and all the other activities taking place in the VH.

The cover picture this month is of the bluebells in Barby woods ... which reminds me that there is a new 'Local Flora & Fauna' photography class in this year's MBGS (5 Sep). So, something else to keep my grandchildren amused this summer holiday (once they have finished their crocheting, baking, flower-arranging and recycled-materials construction project of course



### Annual Advertising Rates

6 issues - 1 page - £60

6 issues - 1/2 page - £45

6 issues - 1/3 page - £30

If you wish to advertise please contact

Clerk to the Parish Council

[weltonparishclerk@gmail.com](mailto:weltonparishclerk@gmail.com)

**The next News and Views deadline is**

**FRIDAY 24th JULY 2026**

**All items for inclusion should be submitted by this date.**

**Tanya Becker,**

[weltonnveditor@gmail.com](mailto:weltonnveditor@gmail.com)

### Welton Short Mat Bowls Club

The mats are rolled out at 2pm until 4pm every Wednesday. If you cannot be there all the time, don't worry, just come for as long as you can. A thought, if you are on a school run then you can stay until school comes out and you don't have to live in Welton. You will receive a warm welcome.

For further information please give me a call.

Margaret Jones, 01327 705402



## **SOMETIMES WE JUST NEED TO SAY THANK YOU, SO .....**

The lay by at the top of the road down into Ashby St Legers continues to be a magnet for fly tipping and litter. Thank you to whoever has been visiting the site and tidying up!

The Recreational Trust's Spring Quiz was a well-attended and well-organised success and, of course, a lot of fun! Thank you to the committee members for all their hard work.

The Naseby battlefield (joint Walking/History groups) tour was also a very enjoyable and informative morning. Thank you Chris and Suzanne.

I was also walking past the cemetery a few days ago and I couldn't help but notice how beautiful it looks. It is obviously tended with loving care. This is due to two people who give their time to make sure that those who lie there and those who visit are in a place of peace. These people are John Mortimore and David Goode. Thank you to both of you for all you do. It is very much appreciated.

... and, of course, where would we be without the ongoing efforts of our parish and WNC councillors - well done and thank you all! With a special thank you to John Emery, who has this year clocked up an amazing 50 years service on the Parish Council.

### **AIR B & B in WELTON VILLAGE**

**Sleeps 2**

**Open plan room with double bed, kitchenette & double shower/bathroom**

**Comes with secluded parking**

**Pets Welcome**

**For availability call Jenny on**

**07773 198420**



## Welton Village Summer Fete is Back!

We're delighted to invite you to this year's Welton Village Summer Fete – a fantastic afternoon for the whole community to come together, enjoy the sunshine, and support great local causes.

**Saturday 13th June**

**2:00 – 5:00 PM**

**Welton Village Hall & The White Horse Pub**

---

### What's on:

- Live music
- BBQ serving up delicious food
- Summer raffle with great prizes
- Stalls, games, and activities for all ages

Whether you're coming with family, friends, or simply fancy a relaxed afternoon out, there's something for everyone to enjoy.

### Supporting our community

All funds raised will be shared between Welton CE Academy and St Martin's Church, helping to support local children and community initiatives.

Come along, bring your neighbours, and make a day of it – we can't wait to see you there!

## Hi Everyone

Rainbows meet on a Friday evening, 5pm to 6pm at Welton Village Hall and girls range from 4 years to 7 years. We currently have 11 Rainbows, 2 Rainbow helpers and 3 adult leaders. Here are just a few things the Rainbows have been up to during 2026 so far.....



We started off the year celebrating Burns Night. We made highland cows out of paper plates, ate shortbread and drank iron bru and finished the evening welly wangling

We held a summer party at the end of January (I know, we are a little crazy) but the Rainbows loved it. We put the heat up



high and the girls came in their summer clothes. We played volleyball with balloons, made and drank mocktails, ate ice-cream and had a go at limbo dancing.

We made "proper" pancakes, cooked them on our stoves and ate them. We celebrated Girl Guiding Thinking Day by travelling around the



world on our plane sampling different foods from different countries. We even made our own passports. We had a space evening. The Rainbows made helmets out of paper plates and launched bicarbonate rockets in the car park.

We had our Rainbow Promise evening. This is where the new girls make their promise, as a Rainbow walk down the Rainbow path and jump over the Rainbow at the end (with help). They

get their Promise badge from Debbie at the end. We finished the evening making a little pot for them to put their Promise badge in when they take it off their uniform.

To finish the Spring term, we had an Easter Egg hunt around the Village Hall and decorated egg-shaped cards with painted pasta. We have just finished working on our Animal Lover badge.





The Rainbows brought in a picture of their favourite animal or pet and spoke about it to the rest of the group. We made balloon puppies and walked them up to the park (don't tell the Parish Council as dogs are not allowed in the park). The

last part of the badge included a visit from a lady from Animals Encounters. The Rainbows got to see a tortoise and a tarantula. Held mice, a bearded dragon and even a snake. We got a told as leaders as well.

Last week we had a den building and story telling evening inside the Village Hall. We still have lots of plans for the rest of the summer term including a "nearly" sleepover in July.

Yours in Guiding

**Sarah Souter (Assistant Leader)**

**07960 274410, [sarah.souter@outlook.com](mailto:sarah.souter@outlook.com)**



Girlguiding is an operating name of The Guide Association.  
Registered Charity No: 304418

## Welton Soapbox Derby - 11 July

It's Back for 2026! We hope everyone is as excited as we are, to see this fabulous summer event return to our village!



Lots of planning and organising going on currently! If you would like to enter your 'Dream Machine', please head to our website: [www.weltonsoapboxderby.org.uk](http://www.weltonsoapboxderby.org.uk). If you are a local group or organisation and would like to utilise the event to raise funds, then please send the team an email to:

[vendor@weltonsoapboxderby.org.uk](mailto:vendor@weltonsoapboxderby.org.uk)

We have secured our main business sponsor for this year's event. Big Thanks again to the team (also Welton residents) at Daventry Workshop Supplies (DWS) for their support. We also have additional committed support coming in from local businesses and residents. If you would like to make a donation, or become a sponsor of the event, please feel free to get in touch via email:

[vendor@weltonsoapboxderby.org.uk](mailto:vendor@weltonsoapboxderby.org.uk)

Any support towards achieving our cost-base is very much appreciated. We look forward to seeing everyone soon!

**reservations@thewhitehorse.co.uk**  
**01327 702820**

A warm welcome awaits at The White Horse — a family-run pub serving excellent food, outstanding service, and a fantastic selection of ales and wines.



Featuring award-winning chef Danny Tompkins, we're proud to offer delicious dining in a relaxed and friendly atmosphere.

### ***What's New?***

#### **Supper Club**

Join us for our next Supper Club on **Saturday 22nd August** — if you love food, then you won't be disappointed! It's a great evening of food, drinks, with good company.

#### **Soap Box Weekend**

Enjoy live music all day and night during the Soap Box festivities, along with a variety of bars along the High Street, including our popular Pimm's & Prosecco Bar.

#### **New Opening Hours**

We're now open from 12 noon on Thursdays and Fridays, with a delicious new lunchtime menu served from the kitchen.

#### **Celebrate With Us**

Our beautiful sunny garden is the perfect setting for celebrations and special occasions. Whatever the event, we'd love to help make it memorable.

**Fresh garden planting** - come & enjoy the sunshine in our lovely garden

**Outside TV** - catch all the big matches on TNT under the sky

**Dog Friendly** - Bring your 4-legged friends along

**Quiz Night every Sunday** - test your knowledge and join the fun

**The White Horse** - your local, lively and lovely country pub. Pop in, say hello and see what's new

# WELTON RECREATION TRUST

**STILL 20 YEARS  
OLD !!**

As previously mentioned 2026 marks the 20th Anniversary of the Recreation Trust being set up. We continue to donate to village recreation activities and recently have made contributions to Welton History Group, Welton Art Group, Women of Welton and Welton Bridge Club, Welton Brownies and Welton Short Mat Bowls Club.

There is link to our web page on the Welton Parish Council and we are always looking for further applications for development of recreation activities

## Spring Quiz

The Spring Quiz was held on 30th April 2026. Questions were set by Jem Patterson and Tony Hopes and ably assisted by Shona Patterson. The rounds flowed quickly and with added picture round the grey matter was put to the test. The winners were Welton Wanderers.



## Defibrillator and CPR

We were pleased to run a CPR awareness morning on Saturday March 28th – thanks to Sue and Matt Davies for their expertise in the session. We will try to run another one soon to continue this awareness.

There are many different resources available online to aid awareness of CPR - these are two suggested websites along with the link to "Medic Alert Safety Bracelets" if you consider wearing one which would carry your basic personal and medical information in the event of an emergency:

- Restart a Heart <https://www.resus.org.uk/get-involved/restart-heart-day>
- British Heart Foundation : [www.bhf.org.uk](http://www.bhf.org.uk)
- Medic Alert (NHS approved) : [www.medicalert.org.uk](http://www.medicalert.org.uk)

A reminder when helping a potential cardiac arrest patient, call for help first, dial 999, check for breathing - if not a cardiac arrest put patient in recovery position, if not breathing start CPR. If a defibrillator is on hand, take the defibrillator out, switch it on and follow the instructions. Remember : the defibrillator will automatically check if the patient needs a shock, if not required the defibrillator will not let you administer one. CPR may still be the best option until medical assistance arrives.

## Walks

Welton Walkers continue to have regular organised walks with the latest walks taking in Naseby Battlefield, Preston Capes, the annual pilgrimage to Badby to see the wonderful bluebells along with short walks around Welton. Taking into

account weather conditions and also suitable distances, there is generally a short circular walk once a month on a Sunday morning - starting and finishing at the Village Hall. Mid-week we have longer walks starting from nearby villages. These are between 4 and 7 miles ending in a cafe / pub for a quick drink.

A selection of walks are also posted on Welton Parish Council website : [www.welton-pc.gov.uk](http://www.welton-pc.gov.uk), under Welton Village Organisations.

The walkers are a friendly, non-competitive group and welcome newcomers. Help with lifts is available so please ask. Good boots and suitable clothing for weather are required but walks are to be enjoyed given the great countryside we live by. There is a group communication to help arranging the next set of walks so if interested, please text 07802 981655 (Richard Proto) to be included in the group.



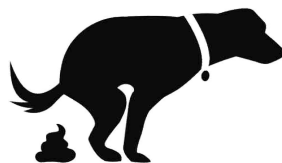
### **Group Dog Walking on Sundays**

In addition to Welton Walkers, there is also a dog walking group who meet on Sundays normally at 9am and undertake both local walks around Welton but also further afield (excuse the pun!) to Staverton, Barby and Churchover. On occasions, the group walk can include going for breakfast afterwards which has traditionally been at Churchover Community Hall, Ashby St Ledger pub and Pistol and Rings at Staverton.

There are normally about 4 to 8 dogs that participate along with their owners and who have got to know each other over the last year and are well behaved – that means both the dogs and their owners! The walks are normally about 4 miles though we do also have a shorter dog walk for older dogs and puppies which is about 1.5 miles so all abilities of dogs are welcome! A guide to dog walks in and around Daventry has also been compiled if anyone would like an email copy. If you are interested in either the walking or the Guide, then please contact Susannah on 07940 323342.

**Welton Recreation Trust : John Edwards, Susannah Jordan, Peter OMahoney, Chris Smith, Sarah Souter, Duncan Webber**

**Do us all a  
favour ... bin it!**



## **Church Services April to May**



### ***Services in St. Martin's, Welton***

**Sunday 31st May** at 10.30am Holy Communion

**Sunday 21st June** at 10.30am Holy Communion \*

See note below.

**Sunday 19th July** at 9.00am Book of Common Prayer Communion

**Sunday 26th July** at 10.30am Holy Communion

### ***Services in Ashby St. Ledgers***

**Sunday 14th June** at 10.30am Holy Communion

**Sunday 12th July** at 10.30am Holy Communion

### ***Services in Braunston***

**Sunday 7th June** at 10.30am Holy Communion

**Sunday 21st June** at 9.00am Book of Common Prayer Communion

**Sunday 28th June** 9am Service at Braunston Marina\* see note below.

**Sunday 5th July** at 10.30am Holy Communion

**Sunday 19th July** at 10.30am Family Service

### **Contact Details:**

**Rector:** Rev Kathryn Evans,  
[revkathryn@outlook.com](mailto:revkathryn@outlook.com), 01788 726912

**Churchwarden:** Jackie Hibbert,  
[Jackie.hibbert@rocketmail.com](mailto:Jackie.hibbert@rocketmail.com), 01327 312514

**Website:** [stmartinswelton.org.uk](http://stmartinswelton.org.uk)



**St Martin's Church is open daily between approx..  
9am and 5pm.**

**Materials are available inside the Church to support  
prayer and reflection, or bring your children in to play  
in the children's corner.**

From  
Reverend  
Kathryn

*Dear Neighbours,*

I hope you're enjoying the warmer weather and the beauty of spring. I confess I enjoy the changeable weather at this time of year. Settled and sunny one minute, and then a strong wind gets up and blows in some more rain.

Wind is an image/metaphor that's often used to describe the Holy Spirit, and I think this is the next topic in my series of sharing what I believe. Again, this is to encourage you to engage with your beliefs, not to coerce you into mine, so this comes in the spirit of "for what it's worth."

The Church marks Pentecost at the end of May. This is the festival which celebrates the coming of the Holy Spirit to the people who were following the way of Jesus after the resurrection. When they were gathered together, they heard the sound of a strong wind in the house, and saw lights, like flames of fire, resting on one another's head. At that moment, they were able to experience the presence of God in them, like they had experienced the presence of Jesus with them before he went back to heaven.

I believe the Holy Spirit is still at work in the Church today; guiding, leading, encouraging, challenging, comforting, and teaching those who welcome the presence of God in their lives. It's an amazing thought, really, that God would come and live with and in us. We're never alone, and we don't have to figure out everything ourselves. But we still have the freedom to make our own choices (and mistakes!) because the Holy Spirit is a very gentle guest, not a bully, always inviting us deeper into our true selves and a life of purpose with the Creator.

For me, life lived with the Holy Spirit is where faith becomes a great adventure. I believe God is love. I believe we learn more about God through looking at Jesus. But The Spirit is wonderfully unpredictable, a bit like the wind. and keeps me on my toes. Sometimes I forget to pay attention, but just like I am always surrounded by air to breathe, I can always breathe spiritually, too. It is certainly no guarantee of an easy or peaceful life. In fact, the Spirit often makes the Church uncomfortable when we get set in our ways. But that guiding, leading, encouraging, challenging, and comforting is always leading us deeper into life and love.

Every blessing,

*Kathryn*

**Outdoor Family Church**  
**Saturday June 27<sup>th</sup>**  
**St. Martin's Church, Welton**      **11am – 1pm**

***Teddy Bears and Butterflies Party***

Families are invited to join us for a *FREE* Summer Party.

- Optional:* Bring a teddy friend.
- Crafts and Toys in the Church.
  - Build teddy dens in the Churchyard.
  - Games.
  - Bring a Picnic, sunscreen and hats.
  - Bring outdoor folding chairs or picnic blankets.
  - All inside if wet.

All families welcome, even if you haven't been before!



***Outdoor Family Church is the last one before our  
Summer break. We resume in September***

Thank you to everyone who supported the recent Plant Sale. The plants, together with the teas in Church, raised approximately £350 which will split between the Church and the PTA.

The Church and PTA also work together to raise funds in the annual fete, which this year is on Saturday June 13th (have you seen the posters?). Please support us by coming on the day – even if it is just to have a cup of tea!



## Ashby Road Churchyard Extension

I'm sure we all agree that the Churchyard extension on Ashby Road is kept in immaculate condition by our dedicated volunteers. It is a beautiful and calm space where villagers and visitors can remember loved ones.

However, life can be made difficult for the volunteers by excess items on graves. If things need to be moved to mow, or dead flowers or wreaths are not removed by those who placed them there, it all adds to the work of the volunteers who care for the space on behalf of all of us. Please consider this when visiting a graves, and if at all possible, remove withered or seasonal items. There are actually some Churchyard regulations which you can view to help guide you which can be found here: <https://www.peterboroughdiocesanregistry.co.uk/memorials.pdf>

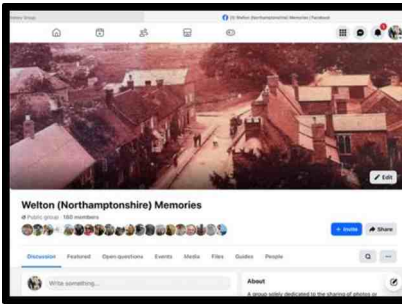
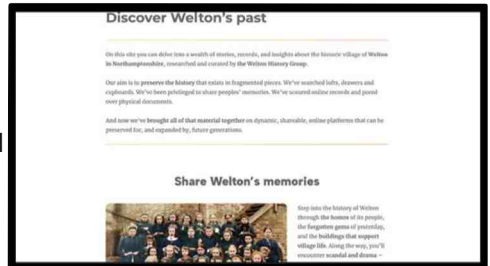
Thank you so much to our wonderful volunteers.



## News from the Welton History Group

On Tuesday May 19th in the Village Hall, we launched the Welton History Group website!

We knew after the January meeting in the White Horse that there was a real interest in the village to share and consolidate our knowledge of Welton and its people. Since then, we have trawled the archives, explored newspaper reports across over 100 years, spoken with residents past and present, deciphered house documents and collected an incredible resource of information, images and memories which we have collated on the website so that all can access.



Do visit [www.weltonhistorygroup.co.uk](http://www.weltonhistorygroup.co.uk) to explore for yourself!

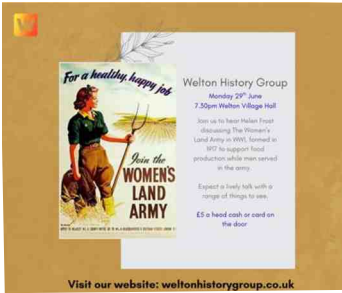
On the website you will find an interactive map and online photo gallery as well as pages relating to Welton History Group events, our newsletter archive and information on local history events in the area, using the blue links at the bottom of the page. In addition to this we have created a new Facebook Welton (Memories) page, which

complements the existing Welton Voice site. This has been a fantastic means of collating images and information. The history archive is very much a work in progress with many more houses, families, traditions and stories to be explored, collated and uploaded. Regular updates to the website will be advised via email. If you would like to join our circulation list or would like to get involved please drop us an email – please see the Get in Touch link on the website.

In addition to the website launch and associated research, it has been a busy spring for the History Group, with a fascinating talk about the Battle of Naseby by Stephen Barker followed up with a battlefield walk a few days later with the Welton Walkers. It is hoped that this will be the first in an annual joint walk led by these groups and open to all in the community to enjoy not just a beautiful walk in the countryside but also to get an insight into the history of our area. More information will follow in due course on the Welton History Group website and from Welton Walkers. Many thanks to Pete Baynton for the attached AI supported image! I'm glad to say it was a lot more peaceful on our walk!



At the time of writing in May we are looking forward to the Annual WHG walk exploring Wolfhamcote, the abandoned village just beyond Braunston, to be led by



Mike Tebbitt. Our final meeting of the year – see below – will be on Monday 29th June at 7.30pm in Welton Village Hall with Helen Frost and focuses on the Women's Land Army of the First World War. £5 pp on the door. All welcome!

Suzanne Edwards  
([suzanne.edwards161@icloud.com](mailto:suzanne.edwards161@icloud.com))

### Welton History Quiz Question:

**Why did the children of Welton School listen to a gramophone record in school in 1923?**

Answer: In March 1923 King George V and Queen Mary recorded a gramophone record to be played to school children across the Empire to promote understanding of the "unity" of the family of the Empire and for each child to understand their part in this.

You can find out more and listen to the recording using the link on our website!

## Make Bake Grow & Show - Sat 5 Sep 2026



**We've made a few changes since last year which you need to know about. Most importantly:**

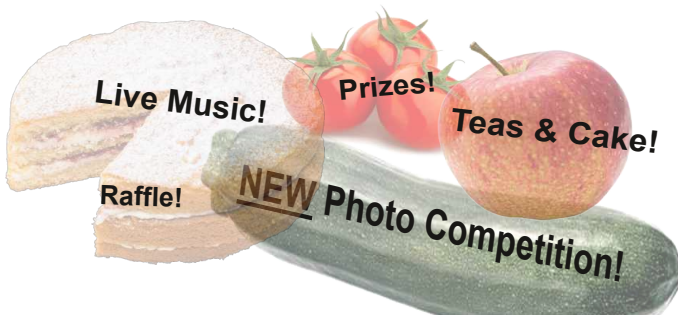
- There's a new 'Photography' class.
- We now have just two separate age ranges (children U-12; children 12+ and adults).
- There are no longer separate children's categories - children may now enter any of the categories, and will be judged only against other children in the same age bracket.
- There will be separate children's 'Best In Show' award.

These latter changes were made in response to requests from several children, some of whom chose to enter the adult classes even though they were competing against adults. The upshot is that children now have much more variety and scope to showcase their talents!

So, parents, if you are looking for ways to keep your children amused this summer holiday then how about encouraging them to enter ... **and it's still free if you're under 12.**



Let's make it another year to remember!!



<<<< ENTRY FORM INSIDE! >>>>

# Welton Make, Bake, Grow and Show

## Saturday 5<sup>th</sup> September 2026

### Entry Form

#### 1. Your Details

Name: ..... Tel: .....

Address: .....

Email: .....

I am (tick one box):    An adult, or child 12+                       A child under 12

Association with Welton: .....

[Eg: resident / attend Welton School / member of WOW, etc]

#### 2. What Are You Entering

List the classes you wish to enter: .....

[Please use the Class Numbers listed on the next page eg: 17 = A jar of 3 different herbs]

**Please note that each person can only have one entry per class**  
Eg: You can enter a Victoria Sponge + Fruit Cake + 3 Cheese Scones BUT NOT x2  
Fruit Cakes.

#### 3. Calculate Your Entry Fees

Total Number of Classes Entered: .....

Total Entry Fee: £ .....

**Entry fees are:**  
**Adults, and children 12+:** 50p per class (if less than 5 classes);  
or £2.00 to enter 5 classes, with 30p per additional class.  
**Children under 12:** FREE

#### 4. Final Step

Fill in this page only and post it (*with your entry fee* in an envelope with your name on it) through the letter box of Rachel Gelder (Show Secretary) at 37a Churchill Road, Welton or Steve Becker at 4 Welton Park.

-----  
**Entries and entry fees must be submitted  
by midnight Tuesday 1<sup>st</sup> September.**

**Please keep a record of your entries.**

## Classes For Both Adults and Children

Class No.	Description	Class No.	Description
<b>HOME PRODUCE</b>			
	<b>CAKES</b> - Exhibitor to provide their own plates		<b>CHUTNEY</b> - Any jar size, contents covered with wax cover and lid, labelled with ingredients, date made
1	An 8 inch/20cm Victoria Sponge filled with jam	7	Fruit or vegetable Chutney
2	A Carrot cake (any size or shape)		<b>JAMS / JELLIES</b> - Any jar size, contents covered with wax cover and lid, labelled with ingredients, date made
3	3 Cheese Scones (any size or shape).	8	Jelly from any fruit(s) or hedgerow.
4	Judge's flapjack recipe (strictly according to the recipe in WNV Aug 2026)	9	Jam from any fruit(s) or hedgerow.
5	A <i>Made-by-Man</i> Ginger cake.	10	Marmalade.
6	6 Cup Cakes	11	<b>HOMEMADE FRUIT GIN OR VODKA</b> Presented in a small screw top bottle clearly labelled with ingredients.
<b>HOME MANUFACTURED</b>			
12	<b>1 CROCHETED ITEM.</b>	15	<b>1 FREESTYLE CRAFT ITEM</b> – Any type of craft, any design.
13	<b>1 KNITTED ITEM.</b>	16	<b>1 ITEM</b> made from recycled material.
14	<b>1 SEWN ITEM.</b>		
<b>HOME GROWN</b>			
On the day Entrants will be given an 8" paper plate on which to display their produce			
	<b>HERBS</b>	24	Medley of 3 fruit
17	A jar of 3 different herbs.	25	A collection of 8 berries of the same variety with stalks attached.
18	A posy of fragrant herbs tied together.		<b>VEGETABLES</b>
	<b>FLOWERS</b> - No shop-bought flowers or oasis to be used.	26	The largest Runner Bean.
19	Vase of 5 mixed flowering stems, at least 2 different kinds.	27	3 same-size tomatoes with stalks attached.
20	Vase of foliage.	28	Medley of 3 vegetables.
21	A perfect but lonely flower in a vase.	29	3 beans of same variety.
22	A flower display in an unusual container	30	3 courgettes.
	<b>FRUIT</b>	31	3 of the same vegetable – other than beans or courgettes.
23	A collection of three tree fruit of the same variety with stalks attached.	32	3 potatoes
<b>PHOTOGRAPHY</b>			
Photographs to be submitted in JPEG (.jpg or .jpeg) format to <a href="mailto:r_tidmarsh@yahoo.co.uk">r_tidmarsh@yahoo.co.uk</a> by midnight Tuesday 1st Sept.			
33	A digital photograph on the theme of "Local Flora and Fauna".		

## Timings For Saturday 5th September

09.00 - 10.30	Village Hall opens for Entrants to stage exhibits.
10.30	Carpark cleared of cars. Gazebos erected.
10.30 - 12.45	Judging. Hall closed.
12.45 - 13.45	GreyZone performance.
<b>13.00</b>	<b>Village Hall Opens, Music, Plants, Raffle, Refreshments. View who exhibited what. See whether you agreed with the Judges' decisions! NEW Photographic Competition!</b>
14.00 - 15.00	GreyZone performance
15.30 - 15.45	Entrants collect their exhibits.
15.45	Presentation of Prizes: Winners of Each Category / BEST IN SHOW! Raffle
16.00	Show closes for this year!!

**Remember to visit the village website and check on the rules:**

<https://www.welton-pc.gov.uk/the-welton-make-bake-grow-and-show/>



**...and remember also that entries and entry fees must be submitted by midnight Tuesday 1st September.**





**Carol Bertozzi**  
**07796 230192**  
**carolbertozzi@hotmail.com**

On March 26th Carol Bertozzi was welcomed back by us all after her holiday in early March and, on April 30th, we had our second meeting.

## Announcements

- **The WI's (Womens Institute) Rosebowl** produced in ???? and with inscriptions of past Presidents, will be housed in the Church, located high up on the right beneath the triptych.
- **Village Fete in June.** In support of the Church and School. Carol asked for help with the provision of cakes and serving.
- **Make Bake and Grow on Saturday 5th September in the Village Hall.** Carol asked for volunteers to help provide home-made cakes, in the kitchen and with serving.
- **Soap Box Derby on Saturday 11th July.** In the Village Hall. Carol asked for help with cakes and serving. This is a very busy, enjoyable time.
- **Visit by WOW members to Coton Manor on May 28th.** Always uplifting. Lifts will be organised and meet in the Village Hall car-park at 1.30pm
- **The talk on June 25th** is Kate Mawser entitled "History of a Northamptonshire farmhouse" (in Braunston).

## Report

Talk on Thursday **26th March** entitled **Life as a Wildlife Artist by Sarais Crawshaw**. Since 1983, Sarais has been a professional artist and takes her own work to exhibitions. She has a studio in her garden in the village of Willey on the A5. She described her subjects – British wildlife eg kingfishers, hares and using a night-time camera, a pine marten in Scotland. Her work is in multiple media, mostly in pastel colours. Sarais shared with us how she approaches her work:

- Select a subject matter
- Photo or video the living creature
- A quick pencil sketch, plan the picture
- Decide which medium. Pastels, acrylic paint, paper-cuts in layers.



Amazingly, in approximately one hour, Sarais worked on a picture of a swan on water (see the photo), in pastels with a reference colour photo. Stunning! She described the various pastels: soft, square or pencil depending on the image, with a sponge to blend colours.

Exhibitions that Sarais presents her work are around the country eg. Art Centres at Rugby, Gloucester, Chester. She has had illustrations published in the BBC Wildlife Magazine.

**The talk on 30th April** was Diary of a Mediaeval Abbess by Jo Parish, aided and abetted by her husband, Steve. They both came dressed in the clothing of a Clunic nun + Cardinal in 1460 (War of the Roses). The nunnery was at Delapre Abbey, Northampton. At that time, there was no harvest, trade or education without the involvement of the Church. Life was hard with no heating. The nuns were in the draughty cloisters where they sang silently.



There were a total of 125 nunneries in England in 1460. The Cluniac nuns from France were Benedictine; there were 2 nunneries in England at Ardington and Northamptonshire.

Eventually, ladies from the aristocracy joined the sisterhood. Being wealthy they joined for various reasons and brought comforts, bedclothes and fashion items such as tassles. Life was with music and education in Greek and Latin. When a novice was selected she became an abbess for life. Clothing for the nuns:

- A shift of unbleached linen was worn close to the body – the only item that was washed.
- The outer garments were wool with linen stockings. A habit of black linen was a particular shape of underarm gussets for comfort. A girdle of truth worn round the waist. A forehead cover, coif and whimple. The veil over the head was two layers of linen, one black and the other unbleached.
- Shoes were of soft leather and a flat sole. The leather was sewn together with 5 stitches to the inch. They travelled everywhere by walking.
- Gloves were of black wool from black sheep with the method of knarling (looping). One shape for the thumb and two for four fingers. Very warm, very comfy.

After the introduction of the printing press in 1450 there was books and silent reading. We were spell-bound all afternoon. Here was a couple with a great interest in living history. "All ages to all ages".

Website: [www.pastalive.co.uk](http://www.pastalive.co.uk), phone: 07742 424869i

Please come and join us, the Women Of Welton, in the Village Hall at 2pm on the

last Thursday of every month. There is always tea and coffee plus biscuits and good conversation.

Carol Bertozzi, 07796 230192, [carolbertozzi@hotmail.com](mailto:carolbertozzi@hotmail.com)

## FIGHTING FOOD POVERTY

A service set up and run by Vineyard Community Church and supported by the people of Daventry and surrounding areas.



**HELP TO MEET THE NEEDS OF 100+ FAMILIES/  
INDIVIDUALS PER MONTH**

**DONATE TO THE  
FOOD BANK**

**Daventry Food Bank, 18A Benbow  
Close, Daventry  
NN11 4JP. Tel: 01327 577851**

**or at Daventry METHODIST CHURCH, or at the Daventry  
branches of WAITROSE and TESCO.**

## **AIR B & B in WELTON**

**BEAUTIFUL 2 BEDROOM COTTAGE  
SLEEPS 4**

**1 DOUBLE - 1 KING SIZE**

**Shower Room/Pets Welcome/Off Road  
Parking**

**Contact Jaki:  
07782 502 257  
[jakijt@hotmail.co.uk](mailto:jakijt@hotmail.co.uk)**

**Check out our website:**  
[www.welton-pc.gov.uk](http://www.welton-pc.gov.uk)



### **Clerk to Parish Council**

Do you want to play a key part in our community? Do you thrive on a variety of work? Are you well organised?

Following the resignation of our Clerk, we are looking for a new Clerk to the Parish Council. This is a flexible part time role that takes about 25 hours a month and is a paid role most of which can be done at a time to fit around you. The only fixed activity is the Monthly meeting on the second Monday of the Month.

If you would like to find out more about this paid part-time role please email: [clerk@welton-pc.gov.uk](mailto:clerk@welton-pc.gov.uk)

### **Welton Parish Council - 50 Years of Service - John Emery**

I am delighted to share with you all, that this month marked John Emery's 50th Year of service on Welton Parish Council. His tireless work around the village on the green spaces and his knowledge of the history of the village is invaluable to the operation of the Parish Council and all of us who live in Welton. I hope you will join with me in thanking John for his unwavering service and wish him many more years on the Parish Council.

### **Forge Care Children's Home**

Forge Care have submitted a planning application (2026/1750/FULL) for a children's residential home at The Barn, Welton, the first house on the left on the way into the village from Daventry. The home would be for 5 young people between the ages of 6 & 18 years of age who have experienced early disruptions in their development (including EBD, SEMH). They would be from Northamptonshire, and the selection of the children will be done in conjunction with the West Northamptonshire Children's Trust commissioner Lucinda Dean.

As part of the Monthly Parish Meeting on Monday 11th May there was an open meeting with Adam Wells, Managing Director and Gavin Miller, Director of Growth Development & Innovation from Forge Care Homes. There were 20 interested members of the public in attendance. There was then a substantial session where members of the public asked questions of the two representatives of Forge Care Homes. These covered:

- the financial status of Forge Care,
- the way the home would work,
- the type of children that would be accommodated
- how the children would be selected,
- the escalation processes that would be in place for any issues.

## **St Martins Spinney – Working Party**

Our next Working Party will take place on Sunday the 5th July at 09:30 when we will be doing general maintenance in the Spinney to ensure it is safe for visitors. Please come and join us.

## **WNC Highways visit to the Village**

On the 15th May I met with 3 representatives of WNC Highways, and we walked the roads in the village discussing the issues we have. We discussed the upcoming Soapbox Derby and the state of Churchill Road. We also covered the Daventry Road and several other areas in the village that need attention, including the pavement at the top of Kiln Lane. We have received an interim report and action plan. We will place this on the WPC website.

## **Closure of Station Road, Welton**

Quantum Traffic Management are intending on carrying out telecom pole replacement works on Station Road. This will require that the road will be closed for 1 day at off peak times, on Wednesday the 5th August 2026. The closure and diversion can be viewed here <https://one.network/?tm=GB150011213>

## **Over 55s Advice & Information Fayre**

The Rt. Hon. Stuart Andrew MP (Member of Parliament for Daventry) will be hosting upcoming Over 55s Advice & Information Fayre, taking place on Friday 12 June 2026 from 1:30pm to 3:30pm at Moulton Community Centre. The event will bring together a wide range of local organisations, charities, community groups and service providers offering advice, support, activities and opportunities for residents aged 55 and over. A flyer for the event has been placed in the Parish Notice Board.

## **Parish Councillor - Vacancy**

Finally, following our advert in the last edition I am please to say we now have two new councillors joining the Parish Council, Margaret Elcock and Duncan Shaw. Please join with me in welcoming them to the Parish Council. We still have one vacancy open so if you would like the opportunity to say how we operate, what we do, and what we spend your money on, come and join the Parish Council! If you are interested, please contact the Clerk at [weltonparishclerk@gmail.com](mailto:weltonparishclerk@gmail.com)

## **Parish Council Meetings**

The Parish Council Meetings are open to the public, if you would like to raise a topic, please come along. The agenda for the monthly Parish Council meetings is on the website, [www.welton-pc.gov.uk](http://www.welton-pc.gov.uk) and placed in the Notice Board prior to the meeting. The meetings are held in the Village Hall:

**June:** Monday 8th at 19:30, **July:** Monday 8th at 19:30, **August:** No meeting

## **Ian Dalziel.....Chair, Welton Parish Council**



## Community Café

Tuesday 9 June  
2- 4pm  
Village Hall

**Do come along and bring your friends and neighbours!**  
**Plenty of tea, coffee, cake and a chance to meet and talk to other villagers**  
**Small voluntary donation to cover expenses**  
**Next café on Tuesday 14 July 2026**

## Helpline 07938 237070

9-12 Monday to Friday  
(Answerphone at other times)

We offer:

- Lifts to appointments etc
- Help with jobs that you may find difficult to do yourself
- Advice on how to get things working or repaired
- Access to support from other organisations, including the Daventry Foodbank.

One of our friendly team will take your call and arrange for someone to help.  
Thanks to those of you who came forward to volunteer after our notice in the last News & Views. There is still an opportunity to join the team!

**Confidentiality is assured**

### NEW VOLUNTEERS NEEDED!

We are looking for new volunteers to help us continue to provide the service we offer to all Welton residents. If you could spare an hour or two occasionally to offer lifts to appointments, pick up shopping or undertake tasks that some people find difficult, please get in touch to talk further about how the scheme operates and how you might help.

We have our own insurance and full training and advice is given on how we operate.  
Contact Peter Walls on [weltongoodneighbours@btinternet.com](mailto:weltongoodneighbours@btinternet.com) or 07941 210290



# Welton Town Lands Trust

Registered Charity No. 204672

## Financial Support Available

### Welton Town Lands Trust – Financial Support Available

The Welton Town Lands Trust has a small amount of money available to provide one-off goodwill support payments to Welton residents who are experiencing financial hardship.

We understand that some households may be struggling with essential living costs, for example:

- Paying an electricity bill, and/or
- Refilling an oil tank used for central heating.

How to apply: Please request an application form by contacting the Clerk to the Trustees on 07771 641841 or [clerk.wtlt@gmail.com](mailto:clerk.wtlt@gmail.com), or by writing to the above address.

Applications will be considered in confidence, and support will be awarded at the Trust's discretion. Funds are limited, so early applications are encouraged.

**Adrian Jolliffe**, Clerk to the Trustees,  
2 Clarkes Way, Welton, NN11 2JJ  
07771 641841, [clerk.wtlt@gmail.com](mailto:clerk.wtlt@gmail.com)



THE  
**CAKE SHED**  
WELTON

Homemade cakes, bakes and brownies from my honesty shed at home!

**4 Emery Close, Welton, NN11 2EN**

- Payments via cash (correct change only please), QR code or contactless...



@thecakeshedwelton



The Cake Shed Welton



## **WELTON SAFARI SUPPER**

### **DO YOU ENJOY GOOD FOOD AND GREAT COMPANY?**

Then keep **SATURDAY 26TH SEPTEMBER 2026** free in your diary for the **WELTON SAFARI SUPPER**.

If you're a seasoned safari veteran, you know the score. If you're dipping your toe for the first time, all that is required is to host one course with wine for 8 people, including yourselves.

The evening starts with the whole group gathering for canapés at a secret location, revealed on the day. From there, the safari commences, with varying venues for starter, main and pudding. You'll meet a different group of people at each. For those still standing, an after dinner party brings the evening to a close.

Safari is all about relaxed fun and is a great way to meet people in the village, at a community event with no driving needed. It is NOT a cooking or a tidiest house competition. Don't worry if you have allergies or food intolerances, as long as you let us know, we can cater for all.

If you like the sound of all this, we just need an **expression of interest** at this point - no commitment needed until later in the year. Once you're definitely 'in' you'll receive plenty of notice about the course you are hosting.

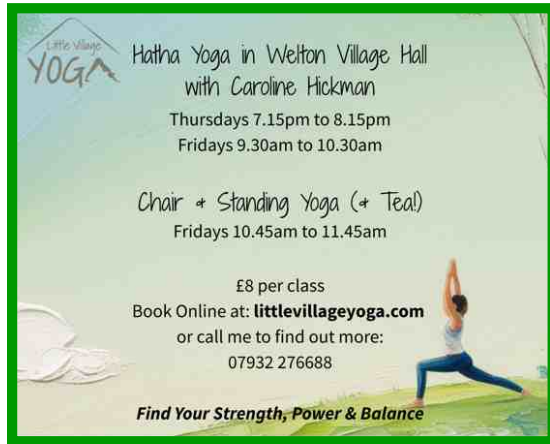
If you fancy hosting the party? We're always on the lookout for hosts so let us know.

Any questions, please e-mail, or call on **07939 224 636**. We will be happy to discuss them with you.

**Safari Supper Team**  
**safarisupper@aol.com**

My grandfather invented the cold air balloon ... but it never really took off.





### **Chair & Standing Yoga with Little Village Yoga – gentle movement for strength, balance and wellbeing**

Each Friday morning, a lovely group from Welton, Daventry, Rugby and beyond meets at Welton Village Hall for a gentle yoga class to move the body and calm the mind. My name is Caroline - I run yoga classes here in the village and I'd love for you to join us. We're a warm, welcoming group and the yoga is simple to follow and kind to the body (with the odd challenge added when you're ready!). All movements are done seated or standing, with no need to get up or down from the floor. It's perfect for building confidence, mobility and core strength - and for easing a busy mind. Each week we finish with a relaxing cup of tea or coffee and a snack together to round off the week and catch up.

#### **What to expect:**

- Seated warm-up
- Standing postures for balance & strength
- Gentle stretching for flexibility
- Relaxation & mindful breathing
- No floor work - move at your own pace
- Tea, coffee & a good chat with a great group afterwards

**Friday mornings (term time), 10.45–11.45am (ish!), Welton Village Hall. Beginners and anyone else warmly welcome.**

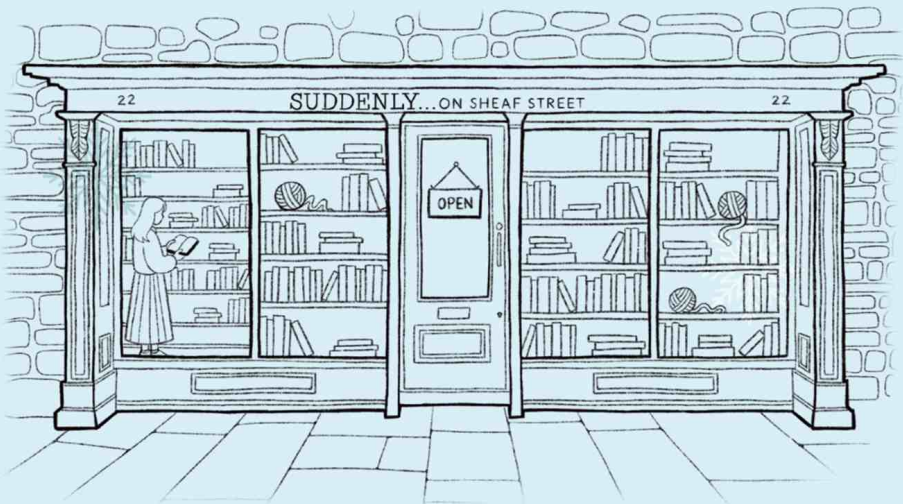
£8 per class, pay as you go.

Visit [littlevillageyoga.com](http://littlevillageyoga.com) or call/message me on **07932 276688** for more information.

# SUDDENLY...

ON SHEAF STREET

**BOOKS & MORE  
FOR THE RELENTLESSLY  
CURIOUS & CRAFTY**



**Books • Yarn • Stationery • Workshops • Events**

**22 Sheaf Street, Daventry,  
Northamptonshire NN11 4AB**

**[info@suddenlybookshop.com](mailto:info@suddenlybookshop.com)**



**Suddenly On Sheaf Street**



**Suddenly\_bookshop**

# Welton Village Hall

07767751386  
wnvhbookings@gmail.com

Spring is just about complete and now we look forward to the Summer. We continue to be busy each week with our regular users but we still have a couple of vacancies during the day on Monday and Thursday afternoons. If you wish to possibly use the hall for either a one off event or a regular activity, please get in touch with our Booking Secretary on [wnvhbookings@gmail.com](mailto:wnvhbookings@gmail.com)

We also look forward to keeping up with our maintenance and gardening duties to keep the hall looking good. Please let us know if there is anything else we can do to improve the facilities.

As we are a volunteer group and whilst we do have a clear responsibility for the Village Hall and its grounds, we are also busy people ourselves. We would appreciate users giving as much notice of any changes / cancellations so we can update our records and of course the users invoice !!

A couple of reminders for users of the hall. Please feel free to use the Community Hub Wifi service (courtesy of Gigaclear) when at the hall. This facility is very useful when the phone signal isn't the best or if you wish to access things like music or social media !! The wifi code and password are provided in the Hall.

Also we need to have a set of operating rules which can be obtained from our Booking Secretary. In these rules we explain the responsibility of the Village Hall and also the hirers and a reminder that we are unable to accommodate certain equipment including smoke machines and bouncy castles of any size. Whilst we understand parties may be more exciting with these, they can cause problems and may result in early closure of a party/ activity if the terms of hire are not being followed.

**WE WOULD POLITELY REMIND THE COMMUNITY THAT THE HALL CAR PARK IS FOR VILLAGE HALL USERS ONLY. PLEASE DO NOT OVERSTAY OR USE CAR PARK WHEN NOT AT THE HALL OR WE MAY BE FORCED TO CHANGE OUR OPEN GATE POLICY OR BRING IN ALTERNATIVE MEASURES.**

# WELTON VILLAGE HALL

## WEEKLY SCHEDULE SESSION TIMES

We are open and are committed to regular bookings per the list below. If you require any further information about any of the groups listed please contact the bookings email and we will put you in touch with the relevant group contact.

Monday	Bridge Club 1st & 3rd Monday inc Bank Holidays Parish Council (2nd Monday of month) History Group (4th Monday of every month)	6.45pm - 10.15pm  7.30pm - 10.00pm 7.30pm - 10.00pm
Tuesday	Pilates Pilates Welton Good Neighbour Teas (2nd Tuesday of month) Panto Group ( October - February)	9.30am - 10.30am 10.30am - 11.30am 2.00pm - 4.00pm  7.15pm - 10.00pm
Wednesday	Art Group (term time only) Short Mat Bowls Brownies (term time only) Guides (term time only)	9.30am - 12.30 2.00pm - 4.00pm 5.15pm - 6.45pm 7.00pm - 8.30pm
Thursday	Parents & Toddlers (term time only) Women of Welton WOW - (Last Thursday of month) Little Village Yoga - Hatha Yoga Quiz (One in March/One in November) Lands Trust - once per quarter	9.30am - 12.15pm 2.00pm - 4.00pm  7.15pm - 8.15pm 7.30pm - 10.00pm 7.00pm - 8.00pm
Friday	Little Village Yoga - Hatha Yoga Little Village Yoga—Seniors' Yoga & Tea Broadway Boogie Rainbows	9.30am - 10.30am 10.45am - 11.45am 1.30pm - 2.30pm 5.00pm - 6.00pm

**Contact Details: [wvnhbookings@gmail.com](mailto:wvnhbookings@gmail.com) 07767 751386**

## PIANO and SAXOPHONE Lessons

Helen Thorne

BA PGCE CT ABRSM

Phone 704344



*For high-quality design, installation, maintenance and breakdown services, contact....*

# Mugleston's

## PLUMBING HEATING

Andrew Mugleston, Daventry, Northants

Office: 01327 604406

Mobile: 07947 315860

[office@muglestons.co.uk](mailto:office@muglestons.co.uk)

[www.muglestons.co.uk](http://www.muglestons.co.uk)

- Installation of Air Source Heat pumps
- Installation / maintenance / repair of Gas and Oil boilers / appliances
- Installation of showers, bathrooms, kitchens and heating systems
- Smart thermostats, Multi-zone and other system upgrades
- Breakdown repairs
- Landlord Certificates
- Minor electrical works



# Bowman Osteopathy

Mobile Osteopath – Professional Care in Your Own Home

Struggling with aches, pains, or stiffness? Get expert osteopathic treatment in the comfort of your own home.

- ✓ Treating all ages – from newborns to older adults
- ✓ Cranial osteopathy for babies, children & adults
- ✓ Support for back pain, joint stiffness, arthritis, posture & mobility
- ✓ Gentle, effective care tailored to your needs

[www.bowmanosteopathy.co.uk](http://www.bowmanosteopathy.co.uk)

07802 747283 [bowmanosteopathy@gmail.com](mailto:bowmanosteopathy@gmail.com)

## WELTON HANDYMAN

Village Handyman for your domestic jobs  
30 years trade experience

Andy

07512 749902

[weltonimprovements@gmail.com](mailto:weltonimprovements@gmail.com)

## Welton Parish Council

<b>Chairman Ian Dalziel</b>	07956 401232	<a href="mailto:ian.dalziel@welton-pc.gov.uk">ian.dalziel@welton-pc.gov.uk</a>
<b>Vice Chair John Edwards</b>	07958 261629	<a href="mailto:john.edwards@welton-pc.gov.uk">john.edwards@welton-pc.gov.uk</a>
Councillor John Emery	01327 878064	<a href="mailto:john.emery@welton-pc.gov.uk">john.emery@welton-pc.gov.uk</a>
Councillor Derek Egan	07918 031611	<a href="mailto:derek.egan@welton-pc.gov.uk">derek.egan@welton-pc.gov.uk</a>
Councillor Samantha Bartlett-Shaw		<a href="mailto:samantha.bartlett-Shaw@welton-pc.gov.uk">samantha.bartlett-Shaw@welton-pc.gov.uk</a>
Councillor David Moore	07545 568954	<a href="mailto:david.moore@welton-pc.gov.uk">david.moore@welton-pc.gov.uk</a>
Councillor Margaret Elcock		<a href="mailto:margaret.elcock@welton-pc.gov.uk">margaret.elcock@welton-pc.gov.uk</a>
Councillor Duncan Shaw		<a href="mailto:duncan.shaw@welton-pc.gov.uk">duncan.shaw@welton-pc.gov.uk</a>
Clerk to the Council	Vacancy	

## West Northants Councillors

Cllr. Rosie Humphries  
WNC Councillor - Braunston and Crick  
West Northamptonshire Council  
Bus. email: [rosie.humphreys@westnorthants.gov.uk](mailto:rosie.humphreys@westnorthants.gov.uk)  
Mobile: 07890112504

Cllr. Andrew Simpson  
WNC Councillor - Braunston and Crick  
West Northamptonshire Council  
Bus. email: [andrew.simpson@westnorthants.gov.uk](mailto:andrew.simpson@westnorthants.gov.uk)  
Mobile: 07973 560432

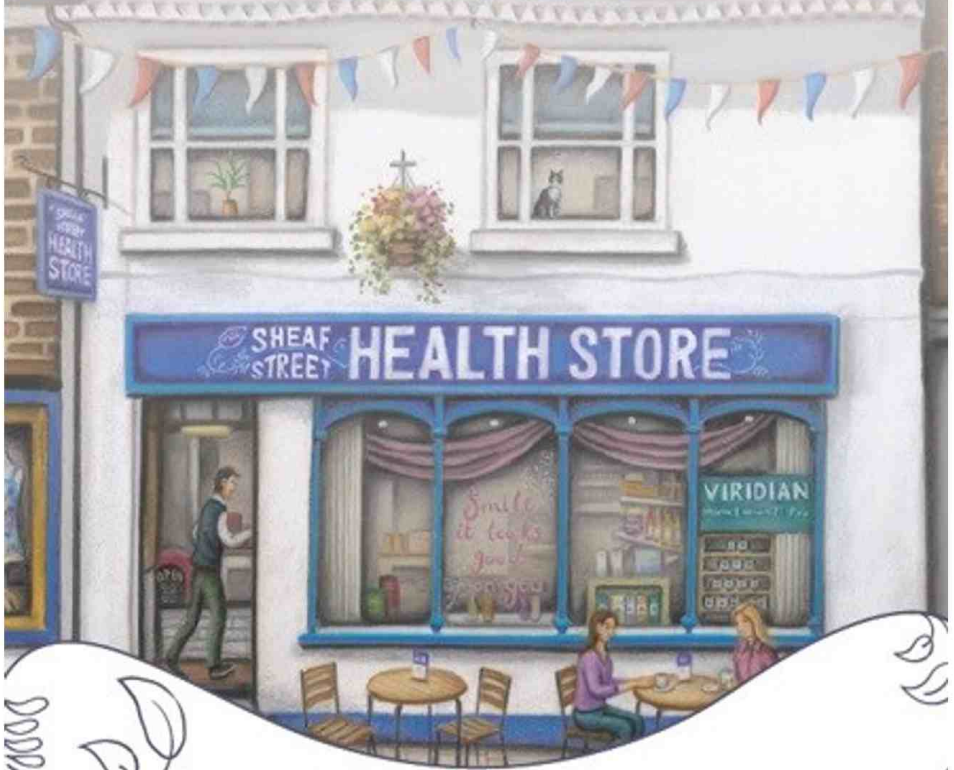
### For Your Calendar:

8 Jun - PC Meeting  
9 Jun - Good Neighbours Cafe  
13 Jun - Summer Fete  
25 Jun - Women of Welton  
27 Jun - Outdoor Family Church  
29 Jun - History Group  
5 Jul - Spinney Working Party  
11 Jul - Soapbox Derby  
- St Martin's Church Tours  
13 Jul - PC Meeting  
14 Jul - Good Neighbours Cafe

### **24 Jul - Deadline for WNV submissions**

30 Jul - Women of Welton  
22 Aug - Supper Club at the pub  
5 Sep - Make, Bake, Grow & Show  
26 Sep - Safari Supper

**VEGAN BARISTA • HEALTHY FOODS • DAIRY FREE • GLUTEN FREE  
VEGETARIAN • ORGANIC • CRUELTY FREE • VITAMINS & MINERALS  
LOCAL HONEY • HERBALS • HOUSEHOLD • ECO REFILLS • GIFTS  
CRYSTALS • ESSENTIAL OILS • NATURAL BODYCARE & BEAUTY •  
FAIRTRADE FASHION**



**SHEAF STREET HEALTH STORE**

**SHOP OPEN 9AM-5PM MON-SAT**