

WELTON NEWS AND VIEWS



WELCOME

We would like to wish a very warm welcome to anyone who has recently moved into Welton

WELTON DEFIBRILLATORS

The village has 2 defibrillators:

1. Inside the Village Hall - available when the hall is open.
2. On the outside wall of The White Horse adjacent to the front door



Ring 999 and the emergency services will provide you with the code to unlock the door.

Take out the defibrillator and use on the patient following the instructions given by the unit.

Restart a Heart

<https://www.resus.org.uk/get-involved/restart-heart-day>

British Heart Foundation : www.bhf.org.uk

Medic Alert (NHS approved) : www.medicalert.org.uk

A reminder when helping a potential cardiac arrest patient, call for help first, dial 999, check for breathing - if not a cardiac arrest put patient in recovery position, if not breathing start CPR. If a defibrillator is on hand, take the defibrillator out, switch it on and follow the instructions.

Remember : the defibrillator will automatically check if the patient needs a shock, if not required the defibrillator will not let you administer one. CPR may still be the best option until medical assistance arrives.

Hello Everyone,

I need to ask you to bear with me for the next few editions. Microsoft are discontinuing their 'Publisher' software later this year so I am having to change to an open-source package called 'Scribus' - it is a bit of a learning curve!

I don't know about you, but I would be very grateful for a little bit more of the very nice weather we had over last weekend. Still, as you will discover when you read the News and Views there is so much happening in this great village of ours! Let's see now.

The History group is always very active as is WOW (Women of Welton). The Safari Supper is something to look forward to a bit later in the year. Short Mat Bowls sounds a lot of fun and is something I am considering having a go at!!!

The Soap Box Derby returns again this year. What a feat it must be to organise such an impressive event that brings so many people into the village.

At the end of the Summer just before Autumn there is, of course, The Make, Bake and Grow Show. I am going to try and win the longest bean competition again just to let anyone out there who is thinking of doing the same. I did win one year so you will have strong competition. I'm a mean bean grower!!!!



Annual Advertising Rates

6 issues - 1 page - £60

6 issues – 1/2 page - £45

6 issues - 1/3 page - £30

If you wish to advertise please
contact

Clerk to the Parish Council

weltonparishclerk@gmail.com

The next News and Views deadline is

FRIDAY 22nd MAY 2026

All items for inclusion should be submitted by this date.

Tanya Becker, weltonnveditor@gmail.com

SOMETIMES WE JUST NEED TO SAY THANK YOU So.....

Village Litter Pick - Sunday 8 March

After a brief safety check and choosing which areas to target everyone set off with their Hi Viz vests, strong gloves for protection, numerous bags for the rubbish collected and with litter pickers at the ready.

As I am sure you will all have noticed our village itself is a clean, litter free, extremely pleasant place to live. You will also have noticed the amount of litter along the roadsides just outside the village. The lay by on the road down into Ashby St Legers seems to be a magnet for fly tipping and as usual it was very upsetting to see.



A big thank you to Chris, Geoff, Debbie, Heather, Richard, Mariet, Sue, Keith, Tanya, Colin, Derek and Lesley for giving up their time for the village litter pick and for giving the roads surrounding our village a chance to look as they should do....lush green verges full of wild life and wild flowers ... *and nothing else!!*

BEAUTY AND THE BEAST AT WELTON VILLAGE HALL

CONGRATULATIONS to everyone who was involved in this year's pantomime!

On the Thursday night of this year's pantomime by the Welton Players I took my two granddaughters to see the most wonderful production Of Beauty and the Beast in our very own Village Hall. Where once there had been an empty room there was tiered seating, a stage with wonderful scenery, fantastic lighting and a live band who were just brilliant!

Adults and children alike were set for an evening of laughter and fun. We were not disappointed!!

From the very first moment it was hilarious! Each player played their character with such enthusiasm and energy. I could not stop smiling and laughing. The reaction from the audience was just as it should be and the children who were

sitting at the front knew exactly how to join in with cheering and booing and shouting out all the right catchphrases. Oh, yes it is! Oh no it isn't. It's behind you!

Of course it wasn't just the children shouting out. All of us who are still children at heart were doing exactly the same! So much work must have been done by everyone. This of course includes not only those people visible in front of and on the stage but also all those people who we did not see, from the initial planning to the final performance on the last night. Thank you!



Welton Recreation Trust - 20 Years Old!!

2026 marks the 20th Anniversary of the Recreation Trust being set up. With the help of my former Chairpersons (Alison and Bob), we have compiled a short summary of the background to the Trust and achievements to date.

The Recreation Trust was set up in September 2006 as a successor to a fundraising sub committee of the Parish Council. The Trust first role was to arrange for the replacement of the playing field equipment with a goal to continue to raise money for all recreational activities within the village.

The initial fundraising was through the village 100 club with additional events run by Welton School, The White Horse football team, Parochial Church Council, Welton Youth Club and Welton Guides.

First chair was Bob Davies, Secretary Carly Reeder, Treasurer Sara Rees. Simon Harrison, Alison Chippington, and Meryl Lovatt were Trustees. Marie Perry, Roy Patrick, Sue Sutherland and Nadia Rea were on the Committee in the early days.

The play equipment cost approx £45,000 and the Recreation Trust raised £4500 (10%) in about 18 months. The remaining money came from Biffa Waste Recycling at Kilsby.

The play area was officially opened in the summer of 2009 (photo attached) with new swings, climbing equipment, a seesaw, slide and basketball hoop.

Since that time, the Welton 100 club was disbanded and replaced with fundraising events such as twice yearly quizzes, film nights, and even a beetle drive and many residents of Welton have contributed to these activities.

Trustees have also changed over the years including the late Jack Perry,

Over the years, the Trust has raised over £25,000 and the list of grants is extensive with one of the key investments being the defibrillator which is currently placed in the Village Hall.

This has been supported by arranging training into CPR and practising operating the defibrillator. Other grants have included charity barn dances, Welton Make Bake Grow and Show, Welton Bridge Club, Table tennis and Pickleball, Welton Craft Group, Welton WI, Welton crochet and knitting club, Welton walking and History groups. The trust also supports the annual Welton Xmas tree.

We look forward to continuing supporting the Welton Recreation activities for the next 20 years.

Duncan Webber (Current Chair) with historical context and assistance from Alison Chippington and Bob Davies.

Spring Quiz

The Spring Quiz will be held on 30th April 2026. Please get in touch with



Chris Smith 07808 739037 if you wish to add a team.

Defibrillator and CPR

Date for your Diary : We are very pleased to announce we will be running a CPR awareness morning on Saturday March 28th at 1030am-1230. This will be a chance to learn about defibrillators and practice CPR techniques. Open to everyone, please contact Duncan on 07887625940 if you wish to attend.

There are many different resources available online to aid awareness of CPR - these are two suggested websites along with the link to "Medic Alert Safety Bracelets" if you consider wearing one which would carry your basic personal and medical information in the event of an emergency.

- Restart a Heart <https://www.resus.org.uk/get-involved/restart-heart-day>
- British Heart Foundation : www.bhf.org.uk
- Medic Alert (NHS approved) : www.medicalert.org.uk

A reminder when helping a potential cardiac arrest patient, call for help first, dial 999, check for breathing - if not a cardiac arrest put patient in recovery position, if not breathing start CPR. If a defibrillator is on hand, take the defibrillator out, switch it on and follow the instructions. Remember : the defibrillator will automatically check if the patient needs a shock, if not required the defibrillator will not let you administer one. CPR may still be the best option until medical assistance arrives.

Website

We have added a web page on the Welton Parish Council. We shall include content on the Welton Recreation Trust including an application form and examples of what people can apply for.

Walks

Welton Walkers continue to have regular organised walks with the latest walks taking in Hellidon in the pouring rain – see picture below, Draycote Water and others around Welton. Taking into account weather conditions and also suitable distances, there is generally a short circular walk once a month on a Sunday morning - starting and finishing at the Village Hall. Mid-week we have longer walks starting from nearby villages. These are between 4 and 7 miles ending in a cafe / pub for a quick drink. A selection of walks are also posted on Welton Parish Council website : www.welton-pc.gov.uk, under Welton Village Organisations.

The walkers are a friendly, non-competitive group and welcome newcomers. Help with lifts is available so please ask. Good boots and suitable clothing for weather are required but walks are to be enjoyed given the great countryside we live by.



There is a group communication to help arranging the next set of walks so if interested, please text 07802981655 (Richard Proto) to be included in the group.

Group Dog Walking on Sundays

In addition to Welton Walkers, there is also a dog walking group who meet on Sundays normally at 9am and undertake both local walks around Welton but also further afield (excuse the pun!) to Staverton, Barby and Churchover. On occasions, the group walk can include going for breakfast afterwards which has traditionally been at Churchover Community Hall, Ashby St Ledger pub and Pistol and Rings at Staverton.

There are normally about 4 to 8 dogs that participate along with their owners and who have got to know each other over the last year and are well behaved – that means both the dogs and their owners! The walks are normally about 4 miles though we do also have a shorter dog walk for older dogs and puppies which is about 1.5 miles so all abilities of dogs are welcome!

A guide to dog walks in and around Daventry has also been compiled if anyone would like an email copy. If you are interested in either the walking or the Guide, then please contact Susannah on 07940 323342.

Welton Recreation Trust: John Edwards, Susannah Jordan, Peter OMahoney, Chris Smith, Sarah Souter, Duncan Webber

Welton Soapbox Derby - 11 July

It's Back for 2026! We hope everyone is as excited as we are, to see this fabulous summer event return to our village!



Lots of planning and organising going on currently! If you would like to enter your 'Dream Machine', please head to our website: www.weltonsoapboxderby.org.uk. If you are a local group or organisation and would like to utilise the event to raise funds, then please send the team an email to: vendor@weltonsoapboxderby.org.uk

We have secured our main business sponsor for this year's event. Big Thanks again to the team (also Welton residents) at Daventry Workshop Supplies (DWS) for their support. We also have additional committed support coming in from local businesses and residents. If you would like to make a donation, or become a sponsor of the event, please feel free to get in touch via email: vendor@weltonsoapboxderby.org.uk

Any support towards achieving our cost-base is very much appreciated. We look forward to seeing everyone soon!

Welton Short Mat Bowls Club



I do hope that you enjoyed the Winter Olympics from Italy and have also been marvelling at the achievements of all athletes at the Para-Olympics. From the media reports everyone was hooked on the curling for several weeks, we all became experts as to the strategy of each game and end. Of course, the British team helped with our enthusiasm as they won a silver medal. I don't think many of us will be sliding down on a tray at Cortina though in the hope of achieving a gold.

Several people have said to me that curling is really bowls on ice, which is true. The similarity does not end there, all curling stones come from Ailsa Craig just off the Ayrshire coast and most of the bowls used by UK bowlers are also made in Scotland. So, thank you Scotland.

We don't have ice at the village hall, yet, I'll have a word with Duncan about that one. Also we cannot get to the same standards as the Olympians, they started curling when they were 8 or 10 years old but we can play bowls and still have fun whatever age we are.

The Short Mat Bowls played in the Village Hall entails standing still with the only movement being in the arm while rolling the bowl slowly the length of the hall. I am sure that most people can do that. Why not surprise yourself and see how good you are?

The mats are rolled out at 2pm until 4pm every Wednesday. If you cannot be there all the time, don't worry, just come for as long as you can. A thought, if you are on a school run then you can stay until school comes out and you don't have to live in Welton. You will receive a warm welcome.

For further information please give me a call.

Margaret Jones
01327 705402

**Do us all a
favour ... bin it!**



Church Services April to May



Services in St. Martin's, Welton

Friday 3rd April at 11am "An Hour at the Cross"
(service of reflection)

Sunday 5th April at 10.30am Easter Communion

Sunday 19th April at 9am Book of Common Prayer
Communion

Sunday 26th April at 10.30am Holy Communion

Sunday 24th May at 10.30am Holy Communion

Sunday 31st May at 10.30am Holy Communion

Services in Ashby St. Ledgers

Sunday 5th April at 9am Easter Communion

Sunday 12th April at 10.30am Holy Communion

Sunday 10th May at 10.30am Holy Communion

Sunday 17th May at 9am Book of Common Prayer Communion

Services in Braunston

Thursday 2nd April at 7.30pm Maundy Thursday Service

Sunday 5th April 6.15am Dawn Service and 10.30am Easter Communion

Sunday 19th April at 10.30am Family Service

Sunday 3rd May at 10.30am Holy Communion

Sunday 17th May at 10.30am Family Service

Contact Details:

Rector: Rev Kathryn Evans, revkathryn@outlook.com, 01788 726912

Churchwarden: Jackie Hibbert, Jackie.hibbert@rocketmail.com, 01327 312514

Website: smartinswelton.org.uk

Outdoor Family Church is gearing up for the Summer!
Fourth Saturday in the month, 11am-1pm with light lunch

- **Saturday April 25th: Meet at Welton Village Hall**
- **Saturday May 23rd: Meet at Ashby St. Ledgers Village Hall**

Outdoor and Indoor activities; Bible Story; Lunch. All welcome.

From Reverend Kathryn

Dear Friends,

Continuing in my series of what I believe: I believe that Jesus is both God and human. Crazy, when you think about it, right? But if God is God, then God is not going to fit in my head, and that's really for the best, knowing my head as I do.

There are a few things in that one statement. First – the use of the present tense – Jesus is, not Jesus was. The second is the word 'both'. The third, that he's a bit of a one-off in terms of being human and God.

There's a wonderful Facebook page called "St Faithful's Havnot". It portrays a fictional church which caricatures the life of the real church with both humour and thoughtfulness. In one post, it encourages us to resist detailed, hard-and-fast categories of belief in favour of embracing Mystery. On this unique and special quality of Jesus, it simply states:

"Jesus is the Son of God. Precisely how this works is a mystery we have decided not to simplify for administrative convenience." And "Jesus is the saviour of the world. The precise mechanism by which salvation is achieved by him remains a standing agenda item."

There's something special about Jesus. This I know in my bones. It's something I know from living my life alongside him. But I don't pretend to understand it. Sometimes, problems arise when we try to fill in the blanks left by Mystery. It is tempting to come up with all sorts of explanations for things we don't understand to ease the discomfort on not knowing. But different people come up with different detailed explanations, then fight about those differences to the point where they accuse each other of not really knowing God at all. That way lies religious conflict.

But here's the thing. Because God both made us, and became one of us, God knows us. That's more important than us understanding God. And if we want to know God, we can look at Jesus. That is enough.

If you don't feel like you really know much about God, join the club! I refer you to my first in this series – "God is love". That's all we really need to know. If you want to understand a little more about the Christian faith or about Jesus. I'm happy to help you find out for yourself.

Every blessing,

Kathryn

St Martin's Church is open daily between approx.. 9am and 5pm. Materials are available inside the Church to support prayer and reflection, or bring your children in to play in the children's corner.



PLANT SALE
MAY 9TH 2PM-4PM

ON THE DRIVE OF
1 WELTON PARK

In aid of the church and
the school association.

As I won't be around on the day of the village fete to run the plant stall, it is happening in May instead, in aid of the same good causes. (There will be no plant stall at the Fete this year.) If you would like to donate any plants, please leave them on the drive of 1 Welton Park in the week leading up to 9th May.

CREAM TEAS
ON THE GREEN



Ashby St Ledgers
SUNDAY 17th May
2.30pm til 5pm

Cakes Raffle Tomicola plants
In aid of urgent repairs to Ashby church
(if wet will take place in the village hall)

Why not take a trip to Ashby St. Ledgers on Sunday 17th May for their Cream Teas on the Green? (The Green is in the middle of the village outside the village hall).

SINGING FOR WELLBEING

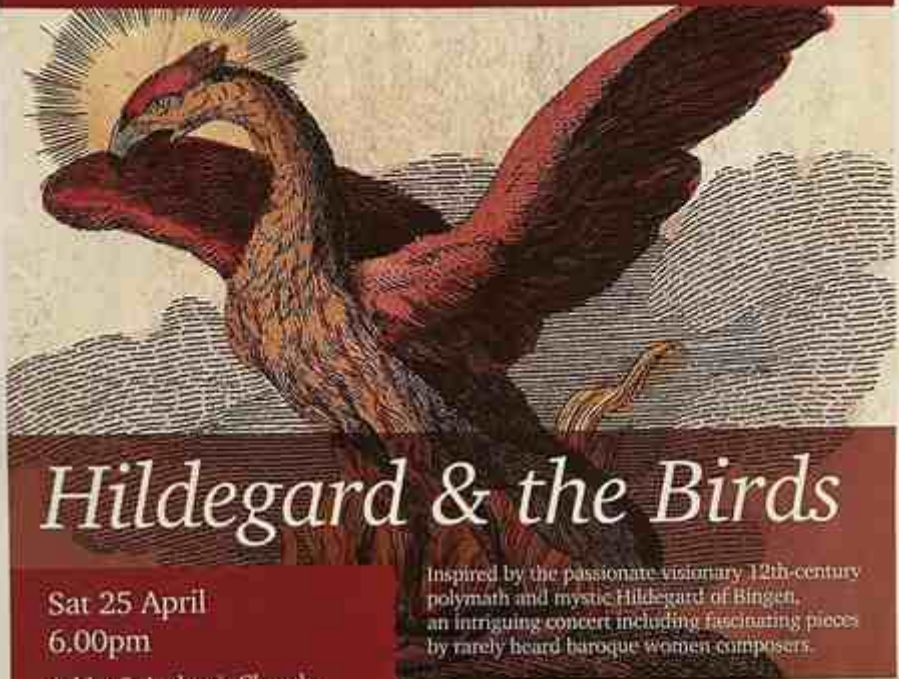


No ability necessary!
Just a good old sing and a cup of tea.

Next meeting:
Saturday 2nd May at 3pm
Braunston Parish Room



Fiori Musicali



Hildegard & the Birds

Sat 25 April
6.00pm

Ashby St Ledger's Church,
Rugby CV23 8UN

Inspired by the passionate visionary 12th-century polymath and mystic Hildegard of Bingen, an intriguing concert including fascinating pieces by rarely heard baroque women composers.

Hildegard *O ignee spiritus*
Orme *The imitation of several birds*
Cozzolani *Laudate Dominum*
Janequin *Le chant des oyseaux*
Hildegard *O ignis spiritus paracliti*
Vizzana *Sonet vox*
Hildegard *Spiritus sanctus vivificans*
Uccellini *Bergamasca*
Leonarda *Magnificat*

Judit Felszeghy soprano
Fiori Musicali Chamber Ensemble
Hazel Brooks violin
Heidi Fardell recorder
Lynda Sayce chitarrone
voices from the Fiori Chamber Choir
Penelope Rapson director/chamber organ

Tickets **£25** Main area
£15 Restricted view

Concessions for children, students and blue badge.
Wheelchair users, free ticket for carer.

Full details & booking @
www.ticketsource.co.uk/fiori
or simply scan here.



This concert is generously supported
by the Cantino Foundation

News from the Welton History Group March 2026

Recognise the road opposite?

Following the success of the January meeting, the Welton History Project is continuing to make exciting discoveries about the history of Welton and its people. We have produced some detailed histories of several properties including The Manor (now Old Manor Court), Churchill House, The Firs, The Stone House, Pear Tree Cottage, Welton Manor and Welton Place as well as the school, the Red Lion pub and others. However, these are just the start!

A Facebook Group – **Memories of Welton** – has been set up and we are thrilled by the number of people who have got involved, posting photographs, memories, helping unpick confusions about properties that have developed over time. We are grateful to everyone for their contributions.



We still have a considerable amount to do! Information comes in from all sorts of sources and collating / fact checking can be quite complicated. We are trying to talk to as many residents as possible to ensure that the online data base, when we officially launch it later this year, is as detailed and accurate as possible.

If you can contribute to this project in any way, please drop me an email – email address below. We are particularly interested in developing oral histories and what you may have learned about your home in Welton. So, if you have ever found

artefacts in your garden, have interesting records about your house, photographs or memories to share, please get in touch!

Bitesize Local History: you may be interested in learning more about local history through the BBC Sounds APP. The **Secret Northamptonshire** podcasts give short (5-10 minute) talks about a variety of history – the one on Borough Hill is fascinating!

The next meeting of the **Welton History Group** is on **Monday 30th March**, when we will be joined by Andy Chapman who will be talking to us about what **Northampton was like Before the Castle**. Once Northampton was one of the most important cities in England, hosting

parliaments and Royalty, but long before this it had a rich and diverse history from the Bronze Age through to the Romans, Anglo Saxons and Vikings. Do come along to find out more! 7.30pm, £5 on the door! All welcome – this is YOUR History Group for residents of Welton and the wider area.

Date for your diary:

You may also be interested to hear that, as reported in the Village Emporium, the gardens of Ashby Manor in Ashby St Ledger's will be open to the public on Sunday 10th May 2026 between 11.00am and 5.00pm, as part of there National Open Garden Scheme. Ashby Manor House is famed as the home of Robert Catesby, a key figure within the Gunpowder Plot, however its grounds were landscaped by Edwin Lutyens at the start of the 20th century. Lutyens also designed cottages within the village. The entry cost for the gardens is £10 per adult and£3.50 for a chid.

For more information and to book, please see the link below:

<https://findagarden.ngs.org/uk/garden/1537/the-manor-house>

I look forward to seeing as many of you as possible on Monday and, as always, I would be hugely grateful if you could spread the word about our meetings to others who may be interested but are not on our circulation list!

Suzanne Edwards (suzanne.edwards161@icloud.com)

(PS. Road above is Ashby Road, entering village)

Make Bake Grow & Show - Sat 5 Sep 2026

SAVE THE DATE!



The 2026 Make Bake Grow & Show will take place in and around the Village Hall on Saturday 5th September. Further details will unfold in due course however the general format will be similar to previous years. If you want to see what we got up to last year then then visit the MBGS webpage using the QR code here >>>>>>





Carol Bertozzi
07796 230192
carolbertozzi@hotmail.com

29 Jan - Our January meeting on the 29th January was held in the Methodist Church Hall due to the panto in our Village Hall. The meeting was led by Jan Halstead as Carol Bertozzi was starting her holiday and included the talk by Kay Andrews (see below).

26 Feb - The meeting on February 26th was introduced again by Jan Halstead and Andrea gave Carol's review of last year's activities. Andrea then went through our accounts with the reasoning for an increase in subscriptions to £30 from £25.

Upcoming events:

- **26 March** - A talk by Sarais Crawshaw, a wildlife artist.
- **11 July** - help in the Soapbox Derby

Suggestions for trips in June/July:

- Weedon Depot with its units including cafe and bookshop.
- Garden visit to Hidcote, Stowe or Sulgrave Manor

Woman On A Narrowboat

The talk on the 29th January by Kay Andrews, "Woman on a Narrow Boat" was exhilarating about her life after buying a 1973 Barney Boat narrow boat (named Pea Green) and then a butty (no engine and attached to Pea Green).

Her previous work was as a history academic in the UK and USA and she also gained two Masters (MAs) along the way, and an unfinished PhD.



After buying her boat she learnt about canals from a 1960's Ladybird book which had pictures about how to handle locks plus a map of the existing canals of that time. She herself upgraded the dilapidated inside of the boat and devised cost-effective methods of repair.

Since 2017, Kay has been painting items with canal art (roses and castles) which she sells. For us, there was a table with many items for sale, including cups, mugs, bowls and plant pots, all decorated in roses and castles. From 2021, she has traded from the top of her boat as well as from the top and inside

the butty at boat fairs and exhibitions.

We thank Kay for an absorbing hour's look at her life on the canals. For your interest, Kay has a website, <https://canalboat.co.uk>, and is on instagram.

One War - Two Sisters

Our fascinating and involving talk this month was from Lis Ainsworth (authorship Elisabeth Dunleavy) speaking of her book entitled "No Way Home". Her family had discovered two diaries from each of two sisters: one from her aunt, retrieved after German soldiers had discarded it into the street outside the family home in Gleiwitz in Gemany. The second diary was written by Lis's mother having been stored away before being discovered by the famiy 2-3 years ago. "One war, two sisters".



Lis told us that the two sisters, her mother and her aunt, became separated when in 1944, at 18 years old, Lis's mother was taken to a live-in factory to manufacture V2 ballistic missiles.

Hitler had declared war in 1939 with fighting over the annexation of Poland and subsequent change of border. Gleiwitz was then close to the eastern border of Germany/Poland.

We saw videos from Lis's father from 1939 in Gleiwitz where life was relaxed and comfortable. This changed.

Now, to the diaries. Over one year of 8 hours per day, Lis translated the diaries from the German language where she had to decipher the writing as well as the words. Her mother had never seen her own sister's diary with its map of Germany of that time. In 1951, Lis's mother came to London, met her future husband and they married in Biedfeld, Germany. She now lives in Warwickshire. An overwhelming book of detailed family history during World War 2.

Please come and join us, the Women Of Welton, in the Village Hall at 2pm on the last Thursday of every month. There is always tea and coffee plus biscuits and good conversation.

Carol Bertozzi

07796 230192

carolbertozzi@hotmail.com



Check out our website:
www.welton-pc.gov.uk

Parish Councillors - 3 Vacancies

If you would like the opportunity to say how we operate, what we do, and what we spend your money on, come and join the Parish Council! We have vacancies for three Parish Councillors. If you are interested, please contact the Clerk at weltonparishclerk@gmail.com

St Martins Spinney – Working Party

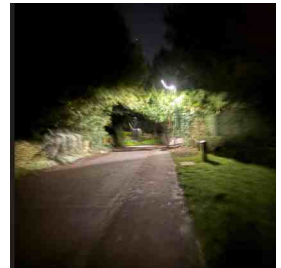
Our next Working Party will take place on Sunday the 19th of April at 09:00 when we will be doing general maintenance in the Spinney to ensure it is safe for visitors. Please come and join us.

Clerk to Parish Council - Update

We are now at the interview and selection stage having received 8 applications, unfortunately none from the village. We hope to have the new Clerk in place in April.

New Streetlight

Many of you will have seen, in early February, that the Parish Council installed a new streetlight opposite the church to improve the lighting on the bend which used to be so dark. Many thanks to Carl Ponder for the picture.



Grit Bins

The grit bins around the village were refilled by Cllr Tim Hill, thank you! We will conduct a review of the bins in the spring to see if any need to be replaced.

West Northants App

As a reminder there is an App for West Northamptonshire Council. It is a useful way of accessing information and services, being a hub for reporting potholes, footpath blockages, fly-tipping, etc as well as being able to find out when different bins will be collected, and slots at Household Waste Recycling Centres can be booked.



Android



iPhone

Garden Waste Service – Brown bins

You can now sign up for the optional, paid for WNC garden waste collections that

start from 1 April. The annual subscription for the 2026/27 fortnightly service is £69 per bin and once you have subscribed, WNC will send you your new 2026/27 garden waste permit. You can sign up for garden waste collections through the WNC website <https://www.westnorthants.gov.uk/bin-collection-services/garden-waste>.

Parish Council Meetings

The monthly Parish Council Meetings are open to the public, if you would like to raise a topic that you are interested in, or ask questions, please come along. The agenda for the monthly Parish Council meetings is shared on the website, www.welton-pc.gov.uk and placed on the Village Notice Board one week prior to the meeting. The meetings are held in the village hall the next meetings are:

- **April:** Monday 13th at 19:30
- **May:** Monday 11th at 19:30
- **June:** Monday 8th at 19:30

Ian Dalziel
Chair, Welton Parish Council

AIR B & B in WELTON

**BEAUTIFUL 2 BEDROOM COTTAGE
SLEEPS 4**

1 DOUBLE - 1 KING SIZE

**Shower Room/Pets Welcome/Off Road
Parking**

Contact Jaki:

07782 502 257

jakijt@hotmail.co.uk



Community Café

Tuesday 14 April
2- 4pm
Village Hall

Do come along and bring your friends and neighbours!
Plenty of tea, coffee, cake and a chance to meet and talk to other villagers
Small voluntary donation to cover expenses
Next café on Tuesday 12 May 2026

Helpline 07938 237070

9-12 Monday to Friday
(Answerphone at other times)

We offer:

- Lifts to appointments etc
- Help with jobs that you may find difficult to do yourself
- Advice on how to get things working or repaired
- Access to support from other organisations, including the Daventry Foodbank.

One of our friendly team will take your call and arrange for someone to help.
Thanks to those of you who came forward to volunteer after our notice in the last News & Views. There is still an opportunity to join the team!

Confidentiality is assured

NEW VOLUNTEERS NEEDED!

We are looking for new volunteers to help us continue to provide the service we offer to all Welton residents. If you could spare an hour or two occasionally to offer lifts to appointments, pick up shopping or undertake tasks that some people find difficult, please get in touch to talk further about how the scheme operates and how you might help.

We have our own insurance and full training and advice is given on how we operate.
Contact Peter Walls on weltongoodneighbours@btinternet.com or 07941 210290

THE WHITE HORSE

reservations@thewhitehorse.co.uk

01327 702820

What's New at The White Horse? 🌿

Summer's on its way, and things are blooming here at The White Horse!

Fresh Garden Planting – Come and enjoy the sun shine in our lovely garden.



Outside TV – Catch all the big matches on TNT under the sky!



Dog-Friendly – Bring your four-legged friends along.



Quiz Night Every Sunday – Test your knowledge and join in the fun.



Supper Club – 28th March – Book your place now for an evening of great food and good company.



New Opening Hours – We're now open from 12 noon on THURSDAYS AND FRIDAYS, with food being served too!



Congratulations to Antonia Bonsor – Our brilliant winner of the Bread Competition! 🍞🍞🍞

BANK HOLIDAY MONDAY - 6TH APRIL

OPEN FROM 12 NOON - Live Music starts at 2 pm 🎸

The White Horse – your local, lively, and lovely country pub.

Pop in, say hello, and see what's new!



Welton Town Lands Trust

Registered Charity No. 204672

Educational Grants

Do you have a child at University? A child that is gifted or talented? A child with a disability? Or are you an apprentice?

The Welton Town Lands Trust has been supporting the residents of our parish for over 400 years. One third of it's annual income is used to provide grants for educational purposes and in December we were able to give £750 to the school. At the next meeting of Trustees we will be considering applications from residents of Welton for grants (in 2025 we gifted £125 for each applicant) to help with the costs associated with education or training.

To be eligible for this grant you must be one of the following:

- a student on a course of post-18 Higher/Further Education following a nationally accredited course, whether full-time, part-time or through distance learning
- a young person requiring assistance in the development of a particular gift or talent
- a child of school age with physical difficulties and/or learning difficulties
- an apprentice, or in training for a trade or profession
- a mature student seeking to improve or extend your career development possibilities through a nationally recognised course
- a representative of a village group supporting activities for the young.

For further information or to request an application form please either email me or contact me on the telephone number below:

Adrian Jolliffe, Clerk to the Trustees, 2 Clarkes Way, Welton, NN11 2JJ
07771 641841, clerk.wtlit@gmail.com

**WELTON SAFARI SUPPER
DO YOU ENJOY GOOD FOOD
AND
GREAT COMPANY?**

Then keep **SATURDAY 26TH SEPTEMBER 2026** free in your diary for the **WELTON SAFARI SUPPER.**

If you're a seasoned safari veteran, you know the score. If you're dipping your toe for the first time, all that is required is to host one course with wine for 8 people, including yourselves.

The evening starts with the whole group gathering for canapés at a secret location, revealed on the day. From there, the safari commences, with varying venues for starter, main and pudding. You'll meet a different group of people at each. For those still standing, an after dinner party brings the evening to a close.

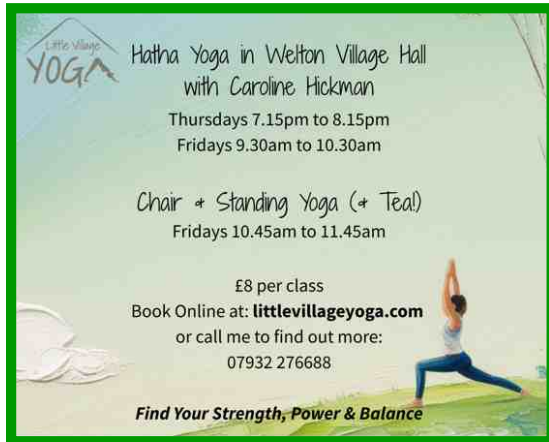
Safari is all about relaxed fun and is a great way to meet people in the village, at a community event with no driving needed. It is NOT a cooking or a tidiest house competition. Don't worry if you have allergies or food intolerances, as long as you let us know, we can cater for all.

If you like the sound of all this, we just need an **expression of interest** at this point - no commitment needed until later in the year. Once you're definitely 'in' you'll receive plenty of notice about the course you are hosting.

If you fancy hosting the party? We're always on the lookout for hosts so let us know.

Any questions, please e-mail, or call on **07939 224 636**. We will be happy to discuss them with you.

Safari Supper Team
safarisupper@aol.com



Chair & Standing Yoga with Little Village Yoga – gentle movement for strength, balance and wellbeing

Each Friday morning, a lovely group from Welton, Daventry, Rugby and beyond meets at Welton Village Hall for a gentle yoga class to move the body and calm the mind. My name is Caroline - I run yoga classes here in the village and I'd love for you to join us. We're a warm, welcoming group and the yoga is simple to follow and kind to the body (with the odd challenge added when you're ready!). All movements are done seated or standing, with no need to get up or down from the floor. It's perfect for building confidence, mobility and core strength - and for easing a busy mind. Each week we finish with a relaxing cup of tea or coffee and a snack together to round off the week and catch up.

What to expect:

- Seated warm-up
- Standing postures for balance & strength
- Gentle stretching for flexibility
- Relaxation & mindful breathing
- No floor work - move at your own pace
- Tea, coffee & a good chat with a great group afterwards

Friday mornings (term time), 10.45–11.45am (ish!), Welton Village Hall. Beginners and anyone else warmly welcome.

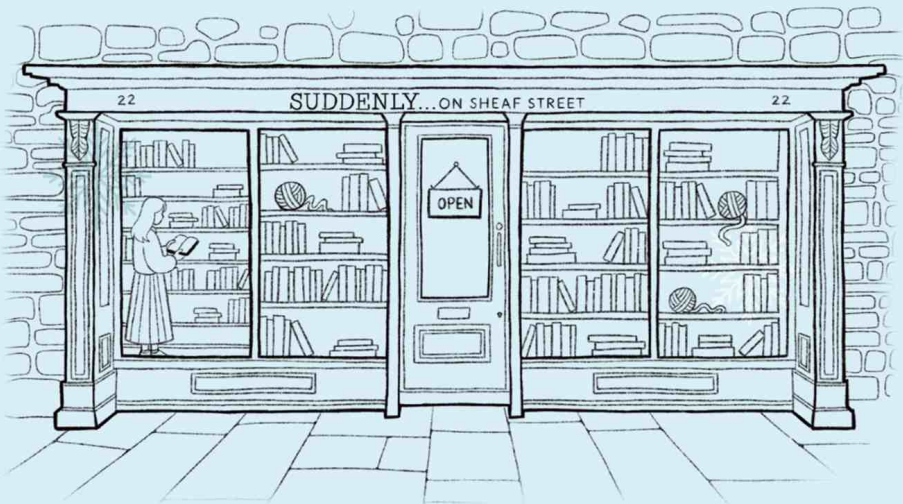
£8 per class, pay as you go.

Visit littlevillageyoga.com or call/message me on **07932 276688** for more information.

SUDDENLY...

ON SHEAF STREET

**BOOKS & MORE
FOR THE RELENTLESSLY
CURIOUS & CRAFTY**



Books • Yarn • Stationery • Workshops • Events

**22 Sheaf Street, Daventry,
Northamptonshire NN11 4AB**

info@suddenlybookshop.com



Suddenly On Sheaf Street



Suddenly_bookshop



**HELP TO MEET THE NEEDS OF 100+ FAMILIES/INDIVIDUALS
PER MONTH**

DONATE TO THE FOOD BANK

**Daventry Food Bank
18A Benbow Close,
Daventry
Northamptonshire. NN11 4JP
01327 577851**

**WAITROSE, Daventry
TESCO, Daventry
METHODIST CHURCH,
Daventry**

AIR B & B in WELTON VILLAGE

Sleeps 2

**Open plan room with double bed, kitchenette & double
shower/bathroom**

Comes with secluded parking

Pets Welcome

**For availability call Jenny on
07773 198420**

Welton Village Hall

07767751386
wnvhbookings@gmail.com

Spring is in the air and we are pleased to see the Winter behind us. We have been busy with all the winter bookings especially the Pantomime and all of our regular users. We still have a couple of vacancies during the day on Monday and Thursday afternoons. If you wish to possibly use the hall for either a one off event or a regular activity, please get in touch with our Booking Secretary on wnvhbookings@gmail.com

We also look forward to keeping up with our maintenance and gardening duties to keep the hall looking good. Please let us know if there is anything else we can do to improve the facilities.

As we are a volunteer group and whilst we do have a clear responsibility for the Village Hall and its grounds, we are also busy people ourselves. We would appreciate users giving as much notice of any changes / cancellations so we can update our records and of course the users invoice !!

A couple of reminders for users of the hall. Please feel free to use the Community Hub Wifi service (courtesy of Gigaclear) when at the hall. This facility is very useful when the phone signal isn't the best or if you wish to access things like music or social media !! The wifi code and password are provided in the Hall.

Also we need to have a set of operating rules which can be obtained from our Booking Secretary. In these rules we explain the responsibility of the Village Hall and also the hirers and a reminder that we are unable to accommodate certain equipment including smoke machines and bouncy castles of any size. Whilst we understand parties may be more exciting with these, they can cause problems and may result in early closure of a party/ activity if the terms of hire are not being followed.

WE WOULD POLITELY REMIND THE COMMUNITY THAT THE HALL CAR PARK IS FOR VILLAGE HALL USERS ONLY. PLEASE DO NOT OVERSTAY OR USE CAR PARK WHEN NOT AT THE HALL OR WE MAY BE FORCED TO CHANGE OUR OPEN GATE POLICY OR BRING IN ALTERNATIVE MEASURES.

WELTON VILLAGE HALL

WEEKLY SCHEDULE SESSION TIMES

We are open and are committed to regular bookings per the list below. If you require any further information about any of the groups listed please contact the bookings email and we will put you in touch with the relevant group contact.

Monday	Bridge Club 1st & 3rd Monday inc Bank Holidays Parish Council (2nd Monday of month) History Group (4th Monday of every month)	6.45pm - 10.15pm 7.30pm - 10.00pm 7.30pm - 10.00pm
Tuesday	Pilates Pilates Welton Good Neighbour Teas (2nd Tuesday of month) Panto Group (October - February)	9.30am - 10.30am 10.30am - 11.30am 2.00pm - 4.00pm 7.15pm - 10.00pm
Wednesday	Art Group (term time only) Short Mat Bowls Brownies (term time only) Guides (term time only)	9.30am - 12.30 2.00pm - 4.00pm 5.15pm - 6.45pm 7.00pm - 8.30pm
Thursday	Parents & Toddlers (term time only) Women of Welton WOW - (Last Thursday of month) Little Village Yoga - Hatha Yoga Quiz (One in March/One in November) Lands Trust - once per quarter	9.30am - 12.15pm 2.00pm - 4.00pm 7.15pm - 8.15pm 7.30pm - 10.00pm 7.00pm - 8.00pm
Friday	Little Village Yoga - Hatha Yoga Little Village Yoga—Seniors' Yoga & Tea Broadway Boogie Rainbows	9.30am - 10.30am 10.45am - 11.45am 1.30pm - 2.30pm 5.00pm - 6.00pm

Contact Details: wvnhbookings@gmail.com 07767 751386

PIANO and SAXOPHONE Lessons
Helen Thorne
BA PGCE CT ABRSM
Phone 704344



For high-quality design, installation, maintenance and breakdown services, contact....

Mugleston's
PLUMBING  HEATING

Andrew Mugleston, Daventry, Northants

Office: 01327 604406

Mobile: 07947 315860

office@muglestons.co.uk

www.muglestons.co.uk

- Installation of Air Source Heat pumps
- Installation / maintenance / repair of Gas and Oil boilers / appliances
- Installation of showers, bathrooms, kitchens and heating systems
- Smart thermostats, Multi-zone and other system upgrades
- Breakdown repairs
- Landlord Certificates
- Minor electrical works



Bowman Osteopathy

Mobile Osteopath – Professional Care in Your Own Home

Struggling with aches, pains, or stiffness? Get expert osteopathic treatment in the comfort of your own home.

- ✓ Treating all ages – from newborns to older adults
- ✓ Cranial osteopathy for babies, children & adults
- ✓ Support for back pain, joint stiffness, arthritis, posture & mobility
- ✓ Gentle, effective care tailored to your needs

www.bowmanosteopathy.co.uk

07802 747283 bowmanosteopathy@gmail.com

WELTON HANDYMAN

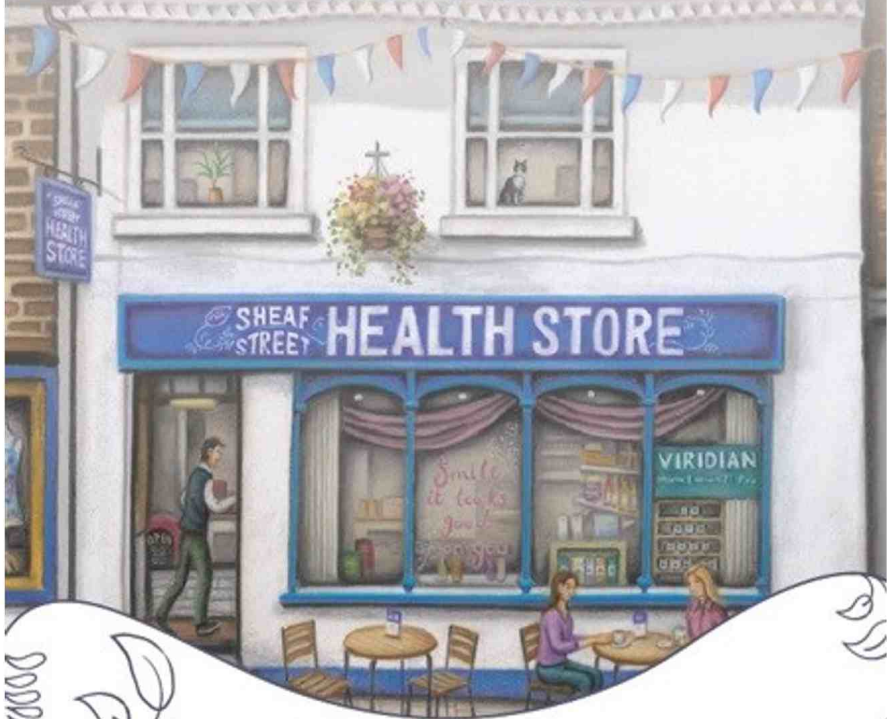
Village Handyman for your domestic jobs
30 years trade experience

Andy

07512 749902

weltonimprovements@gmail.com

**VEGAN BARISTA • HEALTHY FOODS • DAIRY FREE • GLUTEN FREE
VEGETARIAN • ORGANIC • CRUELTY FREE • VITAMINS & MINERALS
LOCAL HONEY • HERBALS • HOUSEHOLD • ECO REFILLS • GIFTS
CRYSTALS • ESSENTIAL OILS • NATURAL BODYCARE & BEAUTY •
FAIRTRADE FASHION**



SHEAF STREET HEALTH STORE
SHOP OPEN 9AM-5PM MON-SAT